

## BC75M SERIES MIL TEMP CMOS OSCILLATOR - 7.0 x 5.0 x 1.7mm

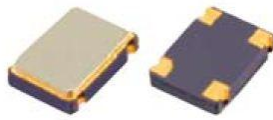
Frequency Range	32.768kHz, 1.000MHz to 200.000MHz	
Supply Voltage $\pm 10\%$	(1.8V, 2.5V, 3.3V - 1.000MHz ~200MHz) (2.5V, 3.3V - 32.768kHz) (5.0V - 1.000 ~106.250MHz)	
Output Load	15pF	
Current Consumption	See Chart Below	
Temperature Range	Operating	-55 °C to +125°C
	Storage	-55 °C to +125°C
Frequency Stability	$\pm 100$ ppm	
Output	CMOS	
Symmetry (Duty Cycle)	45% to 55%	
Output Rise / Fall Time (tr/ff)	10ns max (except 32.768kHz)	
High Output Voltage	90% Vdd	
Low Output Voltage	10% Vdd	
Pin 1 Tri-state	Output Enable Voltage	No Connection
	Output Enable Voltage	70% Vdd
	Output Disable Voltage	30% Vdd
Oscillation Start Up Time	5ms max	
Aging	$\pm 3$ ppm max	
Phase Jitter (12kHz to 20MHz)	1 ps max	
Period Jitter (Pk to Pk)	$\pm 25$ ps max	
Note 1	Inclusive of calibration, temp stability, supply change, load change, shock and vibration, and 5 years aging	

### CURRENT CONSUMPTION: MAXIMUM mA

MHz	1.000 to 34.999	35.000 to 60.000	60.001 to 99.999	100.000 to 106.250	106.251 to 124.999	125.000 to 149.999	150.000 to 164.999	165.000 to 200.000
1.8V	8	15	25	35	35	37	37	
2.5V	10	20	30	40	40	51	51	58
3.3V	16	25	40	50	50	65	75	80
5.0V	25	50	60	80				

6718 N. 59th Avenue, Glendale, AZ 85301 ▪ Phone: 623-435-6555

Website: [www.beckelec.com](http://www.beckelec.com) ▪ Email: [sales@beckelec.com](mailto:sales@beckelec.com)



## BC75M SERIES OSCILLATOR PART NUMBERING GUIDE

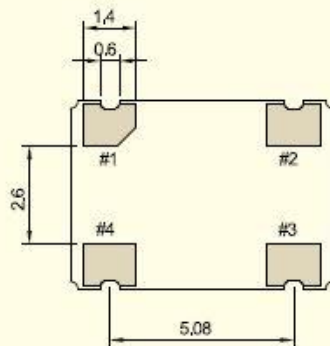
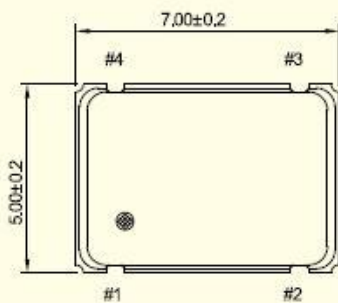
Series	Voltage	Temperature Range/Stability	Frequency
<b>BC75M</b>	1.8V = 1	-55 °C to +125°C /100 ppm = Z	<b>25M000</b>
	2.5V = 2		
	3.3V = 3		
	5.0V = 5		

For other Tolerance, Stability, and Temperature options please consult factory

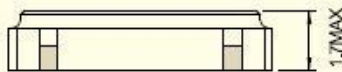
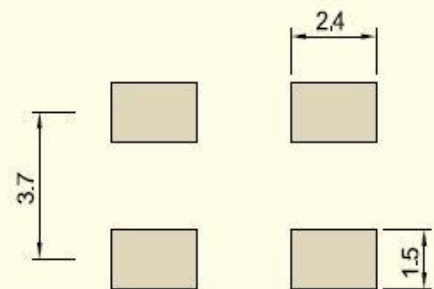
**Example P/N: BC75M – 3 – Z –25M000**

To Request a Quote click here - [www.beckelec.com//request-a-quote/](http://www.beckelec.com//request-a-quote/)

## MECHANICAL DRAWING



• Recommended Soldering Pattern



### CONNECTION

- #1 N.C or EN/DIS(Tri-State)
- #2 GND
- #3 OUTPUT
- #4 Vdd